



## HOW TO GET STARTED WITH QUICKPLUMB PRO

Thank you for choosing Epiphany Software's QuickPlumb Pro, a plumbing design application developed by plumbing professionals for plumbing professionals, yet easy enough to be used by the DIY'er as well.

This quick-start guide will get you going quickly, by showing you what the features are, what they do, and how they work. You will construct a basic structure, populate it with fixtures, and connect them to both the DWV system, and cold/hot water supply system.

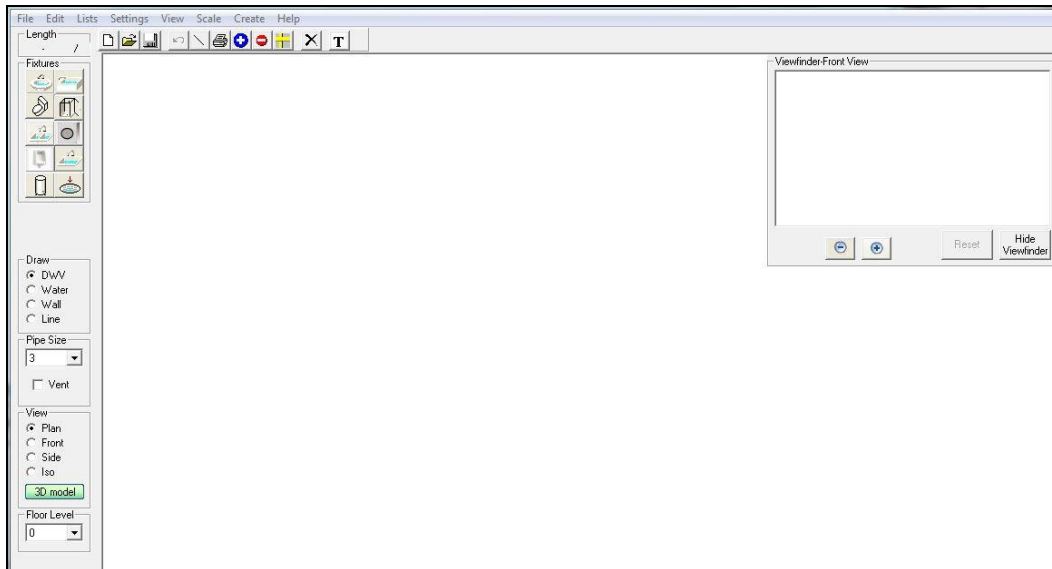
In this exercise you will learn how to:

- Lay out a wall system
- Drag and drop pre-defined fixtures into place on your plan
- Layout the DWV system
- Layout the cold water supply, hot water heater and hot water piping
- Customize the elements for your requirements
- Import graphic drawings, scale and align the floors.

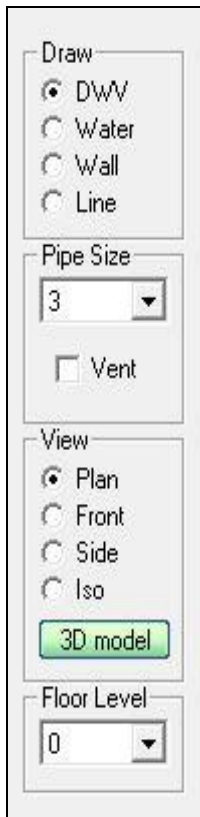
Start QuickPlumb Pro and you will see these options.



Choose “Start A New Project” and the empty workspace screen will open, with a **menu bar** across the top, and a **fixture toolbox** along the left edge, and a **viewer** screen, open in the upper right.



Let's look at some of the controls on the left-side menus.



The '**DRAW**' box lets you choose what to draw.

Options include the **DWV** system, the **WATER** system, a **WALL** system, or a **LINE**.

There are options for **PIPE SIZE**, and a vent option.

Different **VIEWS** of your drawing, **PLAN** view, **FRONT** and **SIDE** views, an **ISO**, or isometric view, and a **3D MODEL** view. Depending on the selection, other sub-menus may appear.

For multistory construction, various **FLOOR LEVELS** accommodate different plans for each floor.

Drag and drop **FIXTURES** are chosen and placed on the plan in the appropriate locations.



This fixture box lets you select which fixture you want to add: lavatory, bath, toilet, shower, kitchen sink, washer, and a hot water heater.

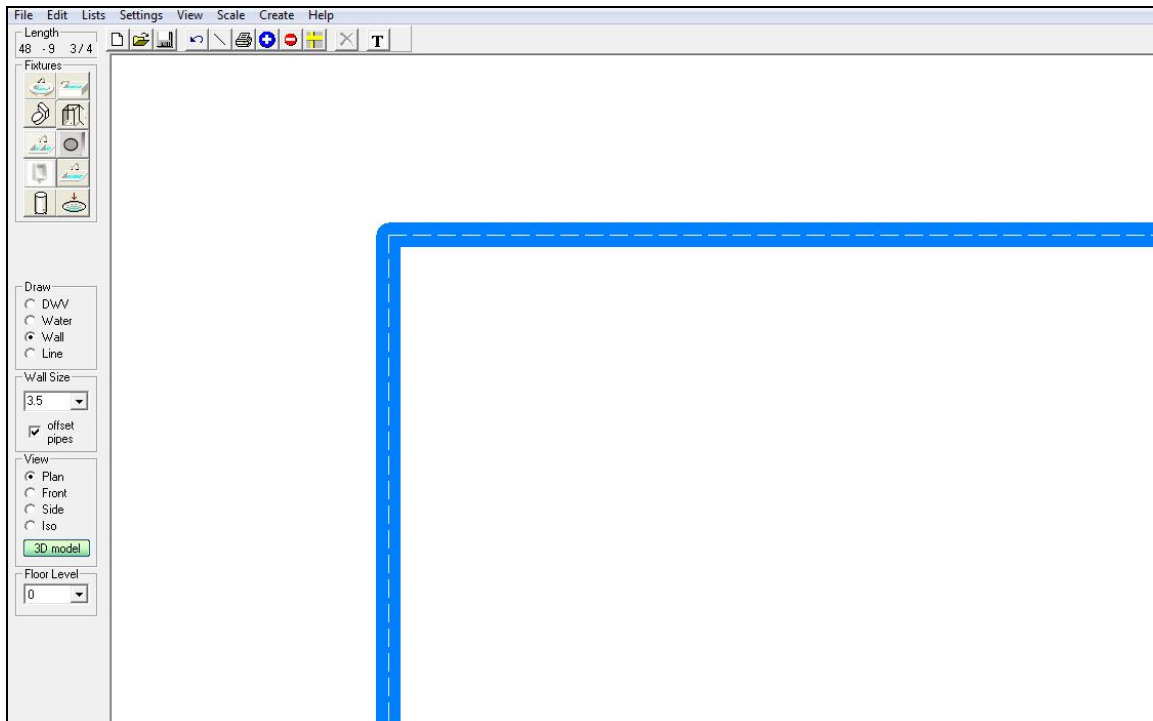
## LET'S GET STARTED

The first thing we'll do is draw a wall system to contain our project.

Select **WALL** from the **DRAW** menu. Notice the WALL SIZE popup that appears, indicating a wall 3.5 inches across, a standard dimension.

An important consideration at this point is the **OFFSET** choice in the WALL option. Choose 'offset' and the pipes will run to the fixture at an angle sufficient to clear the floor joist when drains and supply pipes run in the walls.

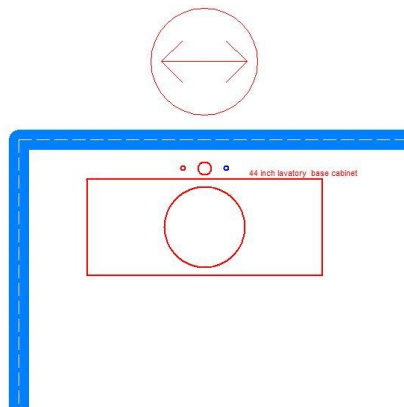
Let's draw some walls using the 'offset' option. The line is different from the solid no-offset line, dashed, representing a stud wall.



Once the basic wall structure has been drawn, we will add some fixtures and pipes.

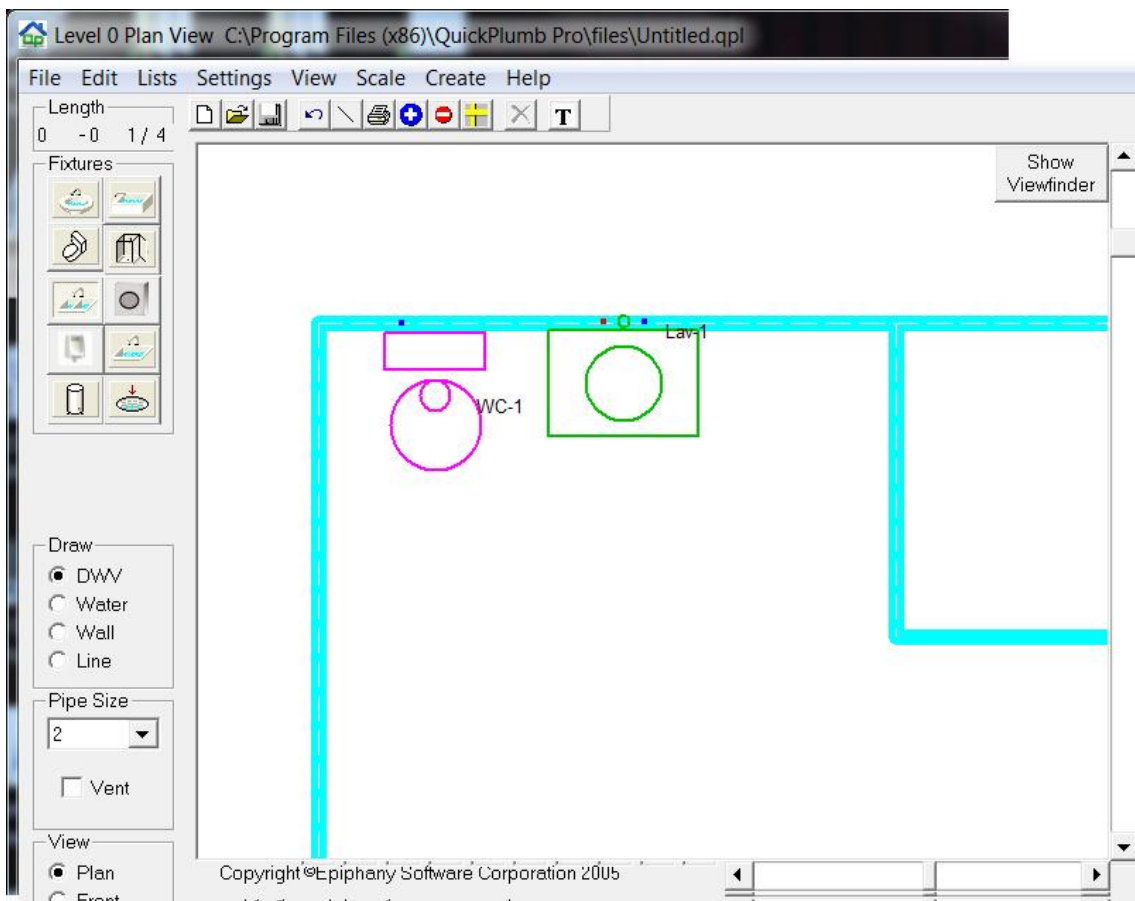
Choose 'LAV' from the fixture menu and drag and drop it onto your drawing. Click on the fixture and a circle with pointers allows you to rotate the fixture to fit against a wall, left right, up and down. Click on the two headed arrow and drag it around in a circular motion to see how it works.

Rotate the lav fixture until the orientation aligns with the wall, and move it into place so the pipes and drain are in the wall.

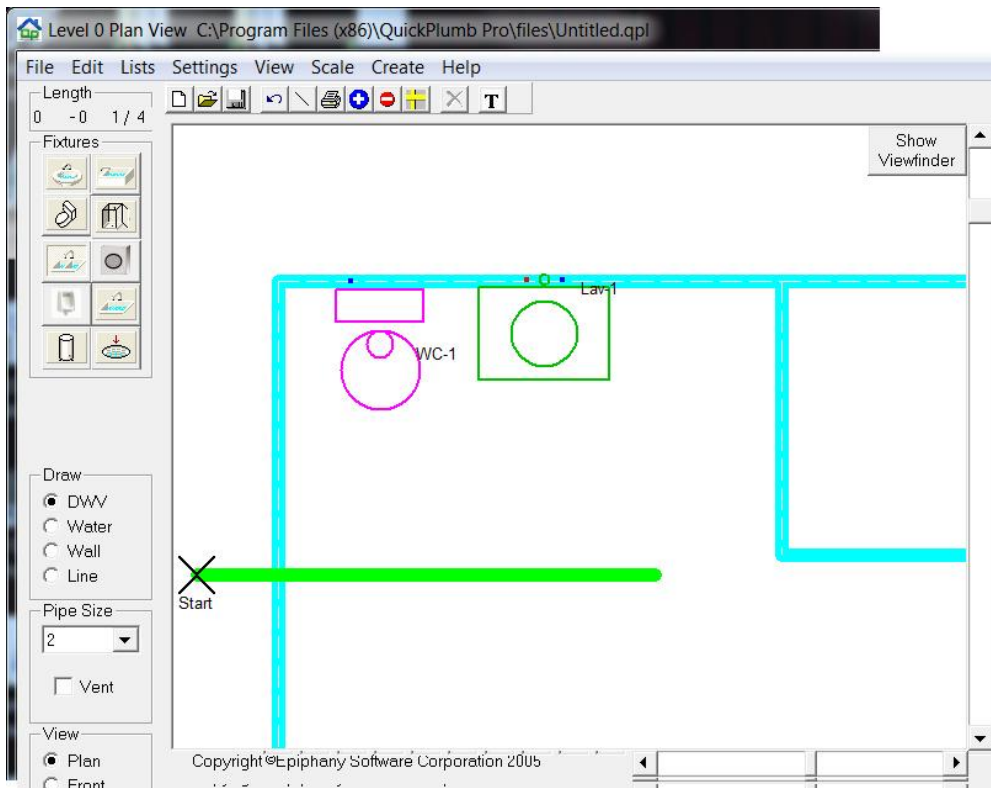


Add another fixture, a toilet, and arrange them similar to this drawing, and add in a DWV line so that it extends to the right past the lav fixture.

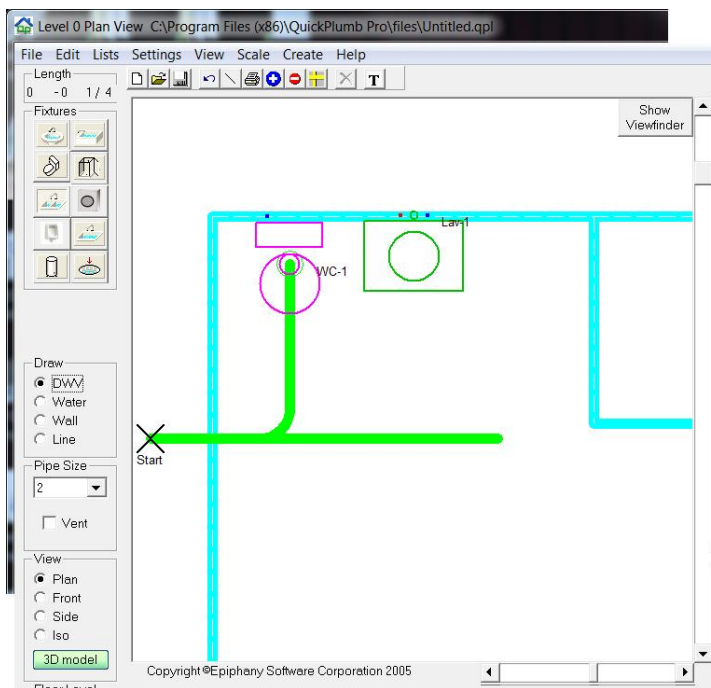
Don't worry about the length, any excess can be deleted.



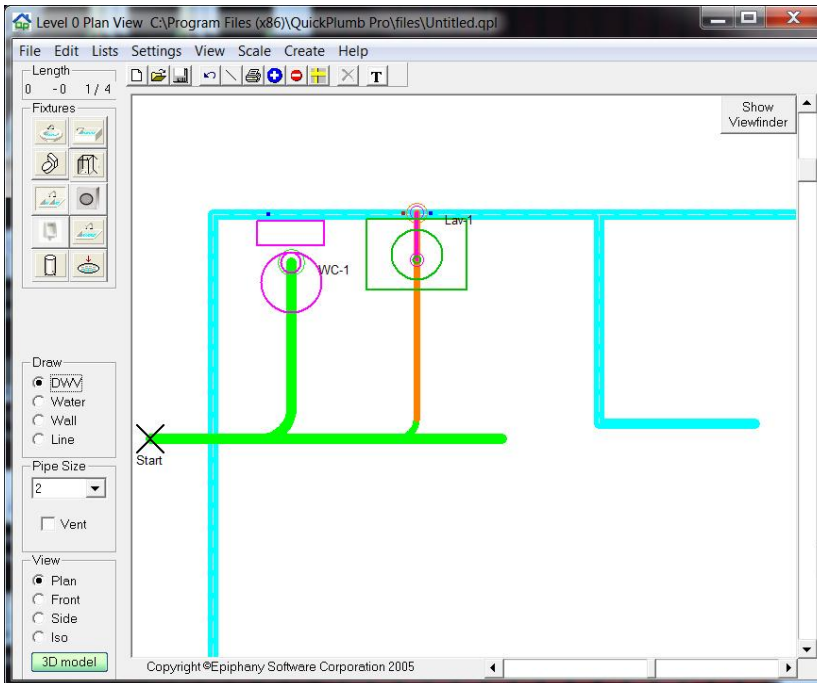
Now, make sure DWV has been selected, and draw a horizontal line across the plan from the outside towards the middle of the room. This is considered the “building drain”



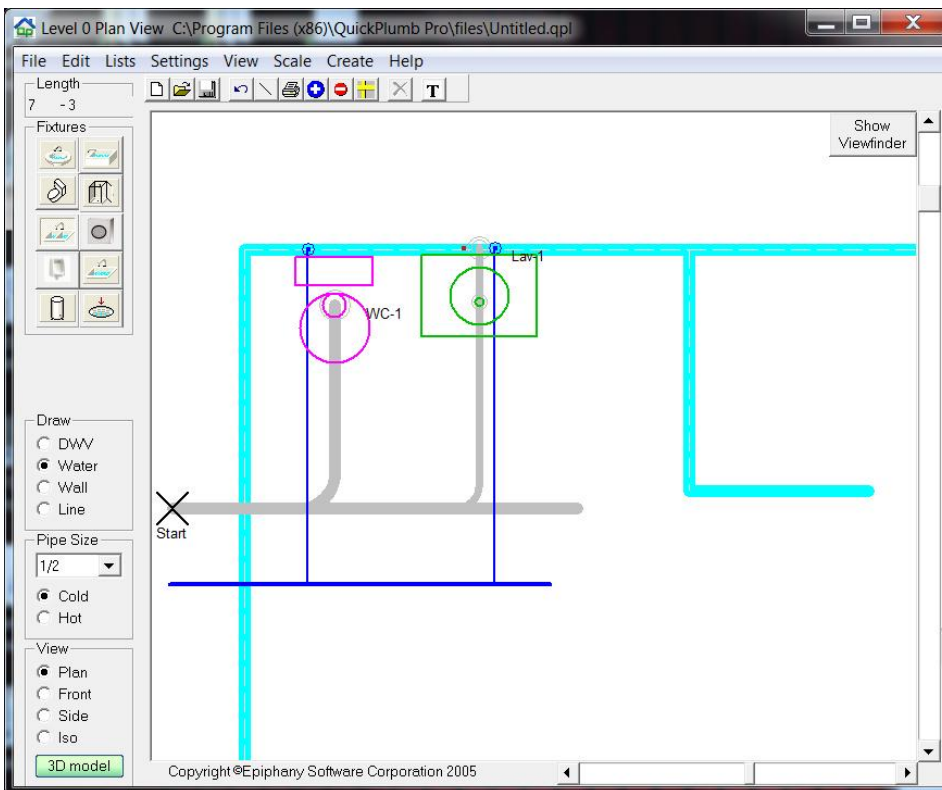
Now draw a vertical line from the toilet waste connector to the building drain.



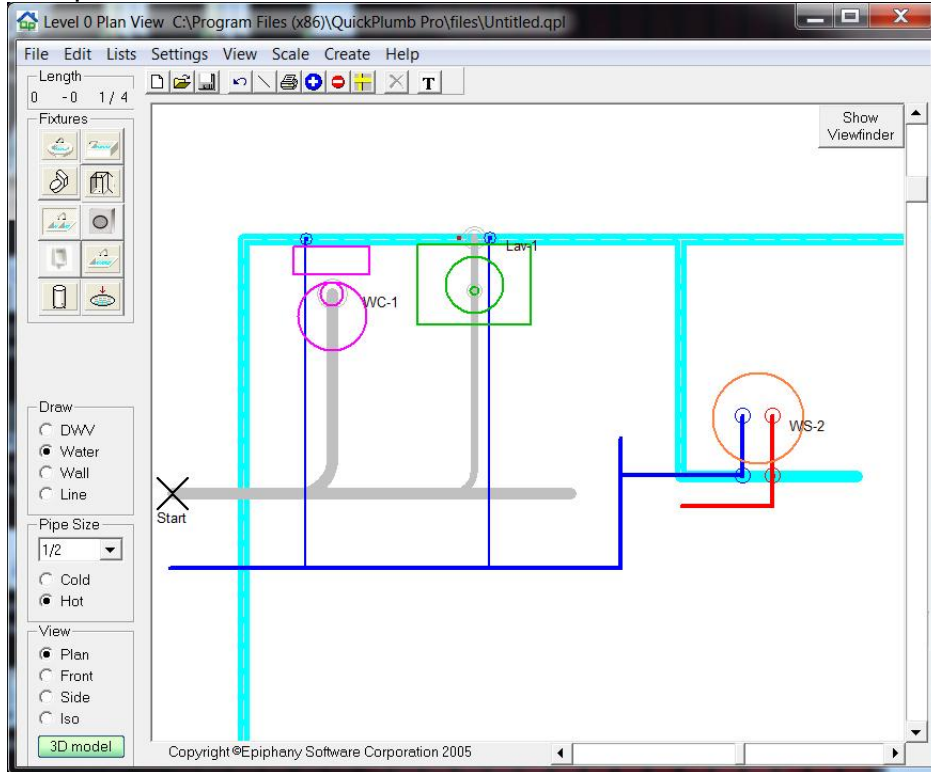
Change the pipe size to 2 and do the same for the “lav” drain pipe.



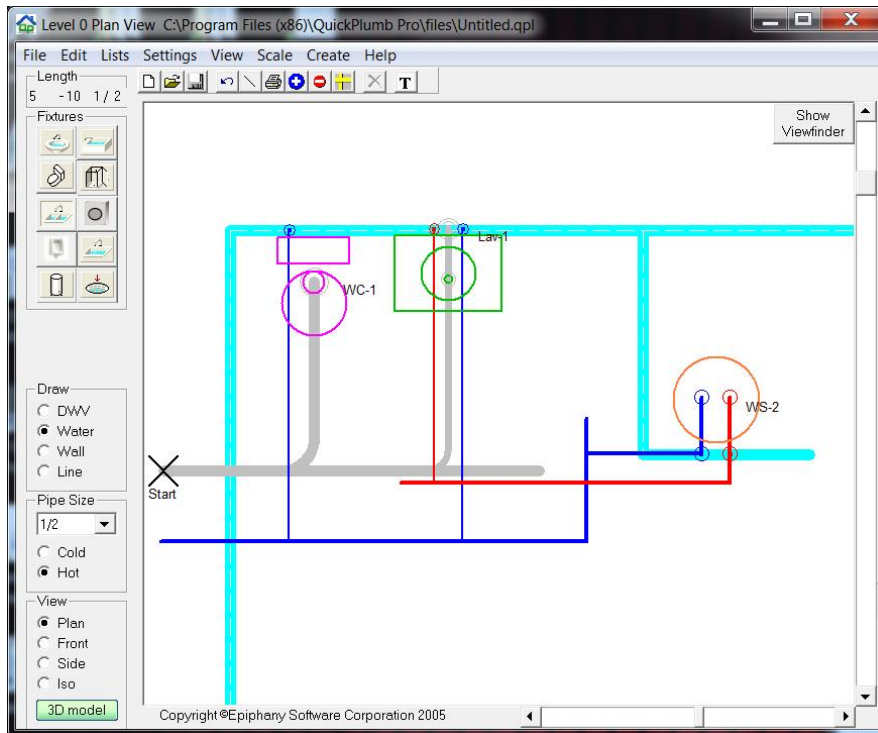
Select “Water” from the Draw Box and add a 1 inch cold water supply pipe. As before, extend it just past the lav fixture. Change the pipe size to ½ inch. Click on each fixture and drag a line down to the 1 inch supply pipe to make the cold water connections.



Finally, let's add one more essential, the water heater. As before, drag, drop and rotate it into position.



Notice it automatically adds the hot water line. Connect it to the lav.



Congratulations! You have just learned how to draw a basic structure, add fixtures and pipes, and connections.



Finally, click on 3D View and see the results of your efforts. Click on the view options just below the menu bar to rotate the drawing through different angles to see the layout.

